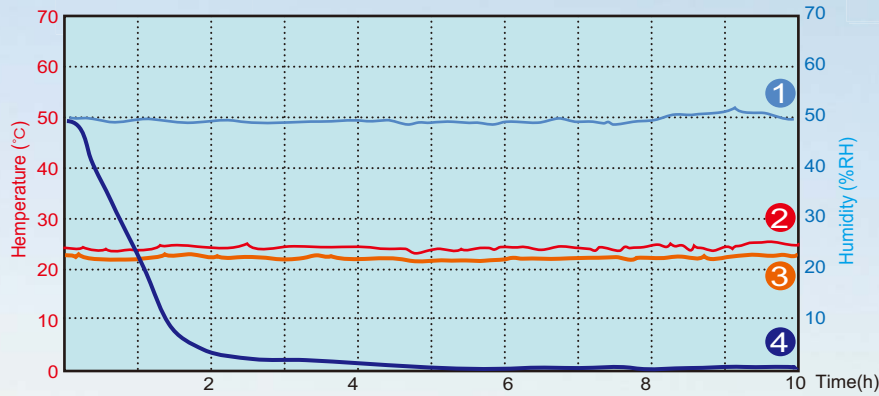
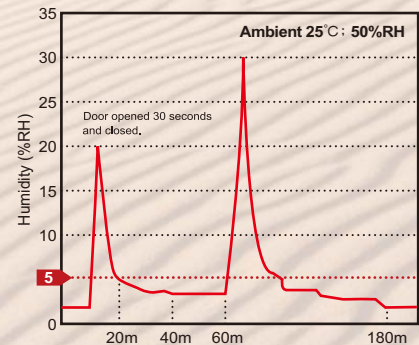
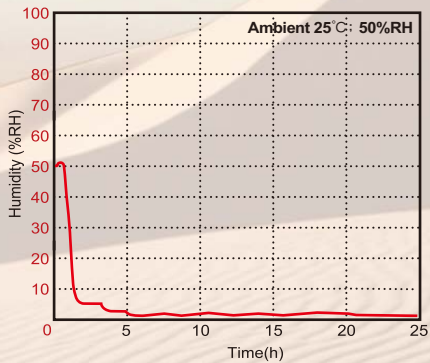
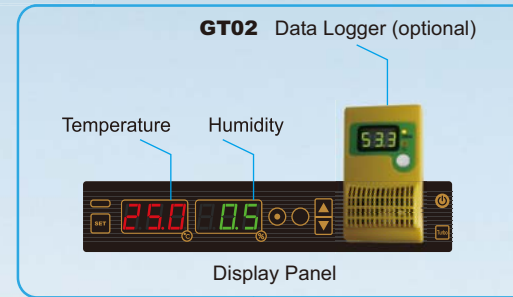


F1 Ultra Low Dry Cabinet <1%RH (Accuracy ±2%RH)



- 1 Ambient Humidity
- 2 Ambient Temperature
- 3 Internal Temperature
- 4 Internal Humidity



F1-200

Capacity: 202L
 Shelves: 2 shelves
 Outside Dimension: W600xD672xH632mm
 Internal Dimension: W598xD642xH525mm
 Storage Bin: Red x1
 Power Consumption: Ave. 83Wh; Max. 285W



F1-400

Capacity: 411L
 Shelves: 3 shelves
 Outside Dimension: W600xD672xH1275mm
 Internal Dimension: W598xD642xH1070mm
 Storage Bin: Red x2
 Power Consumption: Ave. 83Wh; Max. 285W



F1-600

Capacity: 624L
 Shelves: 5 shelves
 Outside Dimension: W600xD672xH1815mm
 Internal Dimension: W598xD642xH1625mm
 Storage Bin: Red x3 Grey x1 Yellow x1
 Power Consumption: Ave. 83Wh; Max. 285W



F1-1200-6

Capacity: 1250L
 Shelves: 5 shelves
 Outside Dimension: W1200xD672xH1815mm
 Internal Dimension: W1198xD642xH1625mm
 Storage Bin: Red x6 Grey x2 Yellow x2
 Power Consumption: Ave. 135Wh; Max. 425W