

# 6 1/2" Probe Cards

## 6 1/2" PROBE CARDS

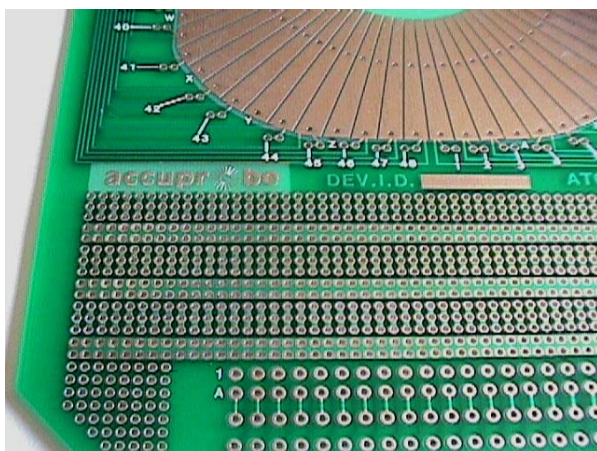
Accuprobe supplies a wide range of 6 1/2" probe cards for use in hybrid and other probing applications. Suitable for mounting metal and ceramic blades, z-adjustable probes or blade spring probes these flexible cards are the core platform for hybrid circuit cantilever probe solutions.

## SK SERIES PROBE CARDS

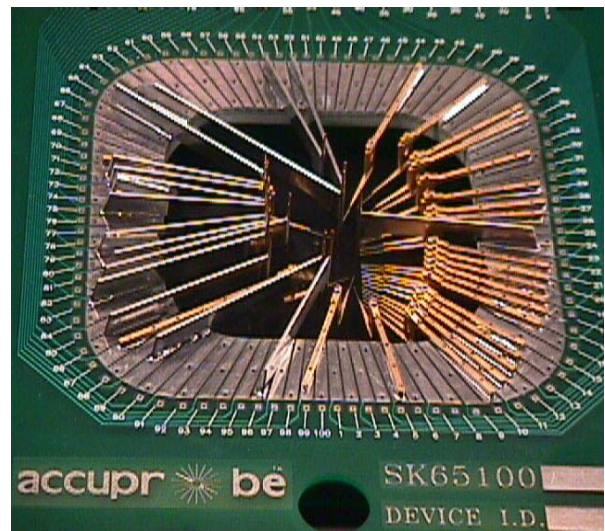
The SK series of probe cards are the perfect solution for fixed pattern probe test fixtures for hybrid circuit test applications. All probe cards in the SK family are essentially similar in layout and design except that four models are offered with 48, 70, 100 and 120 pin edge connectors.

The 48 pin version has 96 solder lands for mounting probes and are arranged in 48 connected pairs. The pairs are connected with a etch that may be cut to provide for convenient mounting and connection of Kelvin probes. The 70, 100 and 120 pin versions have the same number of probe lands as on the edge connector of each model. Cards are manufactured to the standard 6.5 inches in width but can be ordered and trimmed to 6.0 inch width.

The probe cards are fabricated from FR-4 material and can be optionally supplied in polyimide or other advanced circuit board materials. The layouts are carefully designed to minimize probe to probe leakage and every card has a photo-mask to protect the probe card's surface from contaminants. Every probe card is reinforced with a stiffener that is laminated to the underside of the probe card. This attention to design, construction and electrical performance separates Accuprobe cards from the competition.



AT Series Patch Wiring Area



## AT SERIES PROBE CARD

The AT series of active trim probe cards provide a flexible platform for combining signal processing electronics and relays on a probe card to facilitate active trim and test. The AT series cards are available with 48, 70 or 100 pin edge connectors. The cards are designed with the standard 4.350 inch center of rotation which make them compatible with all conventional trim and test systems.

## DL6548 PROBE CARD

The DL6548 probe card is a general purpose probe card that allows perimeter and interior probe placement with complete wiring flexibility. Probes must be hard wired to their assigned connector position. It is 6.5 inches wide and is designed with the standard 4.350 inch center of rotation. This probe card is intended for use with long body Z-adjustable, metal blade and blade spring probes. Maximum cut-out size is 5 inches in each axis.

## LT60100 PROBE CARDS

The LT60100 probe card is 6.0 inches wide with a 4.375 inch center of rotation. The card has a 100 pin edge connector. Incorporated into the layout of the card is a patch wiring area that allows cross connection of probes to edge connector fingers. Hole size is fixed at 3.5 inches square.

Probing the World  
of Microelectronics

# 6 1/2" Probe Cards

## TN6548 PROBE CARDS

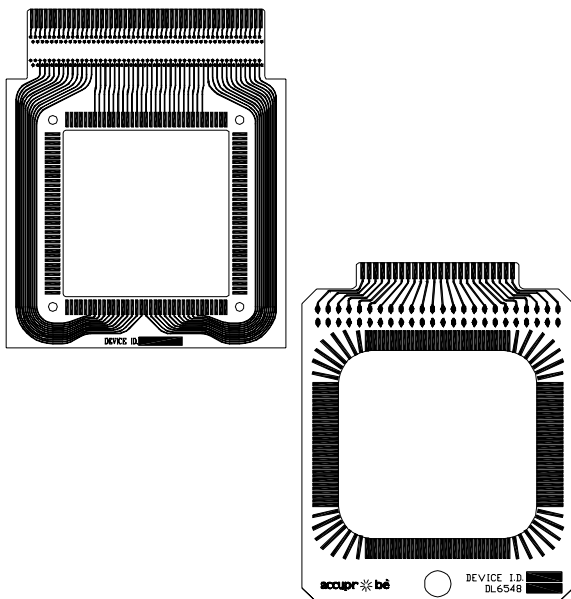
The TN6548 probe card is a general purpose test and laser trim card that is 6.5 inches wide, has a 4.350 inch center of rotation and a 48 pin edge connector. Maximum hole size in either axis is 4.5 inches. This card does not have a photomask.

## LA SERIES PROBE CARDS

The LA series of probe cards are intended for use with devices with a high aspect ratio requiring linear arrays of probes. The probe card layout has the standard 4.350 center of rotation on 6.5 inch card width. The LA series of probe cards are offered with 48, 70 or 100 pin edge connectors. There are 100 probe mounting lands on each card that have connecting traces to a patch wiring area. Simple jumpers from the patch wiring area to the edge connector complete the connection.

## PROBE CARD PROTECTORS

Probe card protectors provide a safe and secure way to protect and store probe cards when not in use. The protector covers provide a clear view of the contents and seal the container from dust and other contaminants. The PCP's are stackable or they can be stored in a rack.



LT60100 and TN6545 Probe Cards



LA5470 Probe Card

## GENERAL SPECIFICATIONS

Design Standard: MIL-STD-275D

Card Material:

Standard	NEMA Type FR4
Special Order	Polyimide
Max Temp:	
FR4	130° C (260° F)
Polyimide	240° C (464° F)

Stiffener Material: NEMA Type FR4

Resistance Trace to Trace: >200 MW @10 V.DC

Capacitance Trace to Trace:<4 pF

Connector Contacts: Gold Plated 50 μinches

# 6 1/2" Probe Cards

## 6 1/2" Probe Card Numbering Guide

<b>SK</b>	<b>65</b>	<b>100</b>	<b>T</b>	<b>2</b>	<b>G</b>	<b>11</b>

Model	Size	I/O	Stiffener	Hole Type	Hole Size		
SK	60	48	X - None	1 - Round		E/W	N/S
SK	60	70	N - Thin	2 - Square	1"	A	1
SK	60	100	T - Thick	3 - Custom	1.25"	B	2
SK	60	120			1.5"	C	3
SK	65	48			1.75"	D	4
SK	65	70			2"	E	5
SK	65	100			2.25"	F	6
SK	65	120			2.5"	G	7
AT	65	48			2.75"	H	8
AT	65	70			3"	J	9
AT	65	100			3.25"	K	10
DL	65	48			3.5"	L	11
LT	60	100			3.75"	M	12
TN	65	48			4"	N	13
LA	65	48			4.25"	P	14
LA	65	70			4.5"	Q	15
LA	65	100			4.75"	R	16
					5"	S	17
					5.25"	T	18

BITA ELECTRONIQUE S.A.  
 45 Rte d'Arlon  
 LU-1140 LUXEMBOURG VILLE, Gr. D. Luxembourg  
 Ph. +352 450010  
 Fx. +352 332643  
 info@bita.lu - www.bita.lu



©2003 Accuprobe, Inc. Specifications may change without notice.  
 Accuprobe and the Accuprobe logo are trademarks of Accuprobe, Inc.