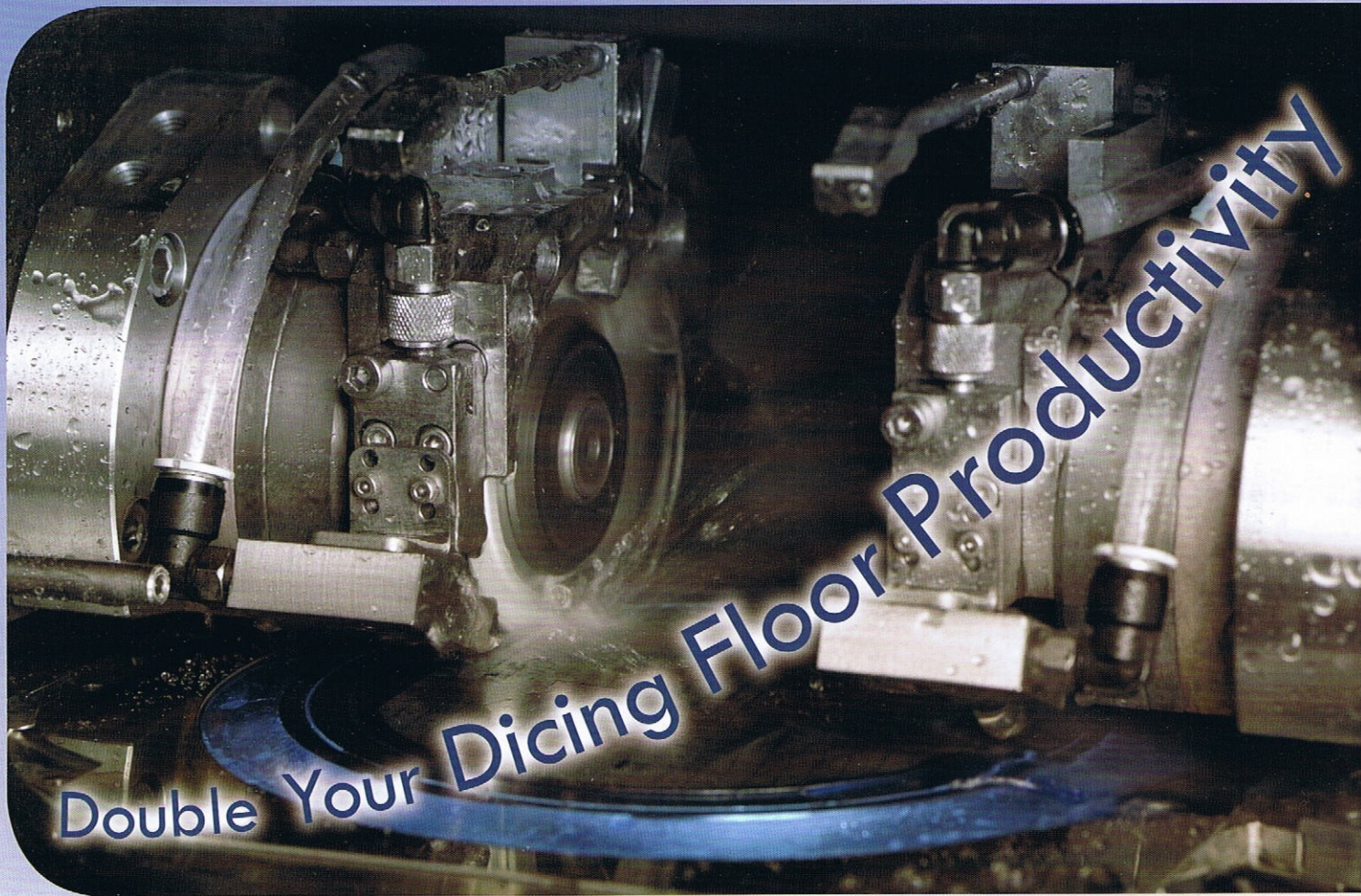


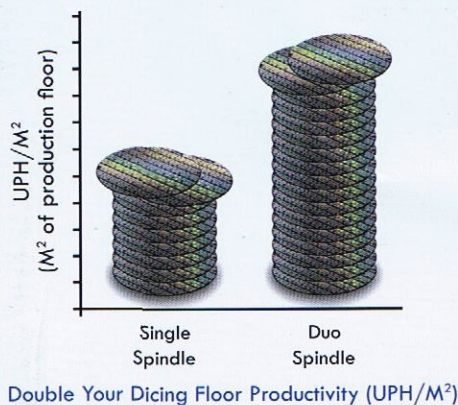
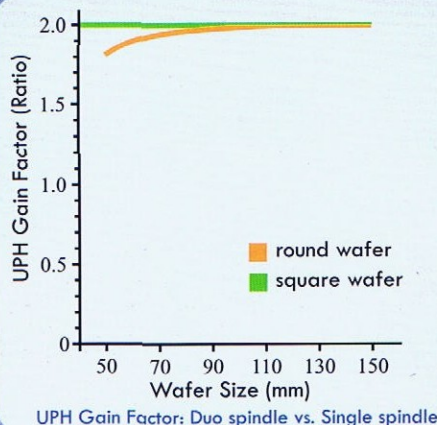
7900 Duo



The Ultimate Dicing System for LED & Discrete Devices



- Two Facing Spindles
- Optimized Cut Sequence
- Small Footprint
- Automatic Vision
 - Alignment
 - Y Offset Correction
 - Kerf Inspection
- Partial Wafer Recognition
- Tape Surface Detection
- 1.0 μm Index Accuracy
- 1.5 μm Accumulative Accuracy
- 17" Touch Screen
- Intuitive GUI
- Easy Setup
- Compact Design

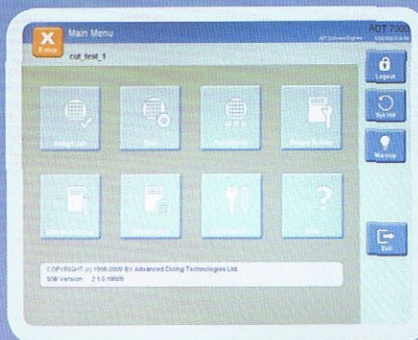


Dimensions (mm)



ADT = Dicing
Advanced Dicing Technologies

Headquarters
Advanced Dicing Technologies Ltd.
Advanced Technology Center, Haifa
31905, Israel
Tel: 972-4-8545222
Fax: 972-4-8550001
Email: sales@adt-co.com
www.adt-dicing.com



Touch screen based user interface for intuitive operation and ease of setup

Specifications

Work-Piece	Max. size	inch	6" X 6"
X Axis	Cutting range	mm	410
	Max. speed	mm/sec	600
	Drive	Ball bearing lead screw	-
		Air bearing slide	-
Y1 / Y2 Axis	Cutting range	mm	160
	Resolution	µm	0.2
	Cumulative accuracy	µm	1.5
	Index accuracy	µm	1.0
	Control	Linear encoder	-
	Drive	Ball bearing lead screw	-
Z1 / Z2 Axis	Max. stroke	mm	40
	Resolution	µm	0.2
	Accuracy	µm	2.0
	Repeatability	µm	1.0
	Drive	Ball bearing lead screw	-
		Ball bearing lead screw	-
Φ Axis	Max. rotation	Deg.	350
	Accuracy	Arc-sec	4
	Repeatability	Arc-sec	4
	Drive	Closed loop direct drive	-
Spindle	Two facing each other (blade to blade)		-
	Output power	KW	1.2
	Max. speed	RPM	60,000
	Rated torque	Nm	0.25
Illumination	Vertical + Oblique	High brightness LED	-
Vision System	Digital camera	Fire-Wire link	-
Utilities	Power supply	Single phase 50/60 Hz	200-240 VAC
	Air consumption	L/min	260
	Air pressure	Bar	5.5
	Cutting water ⁽¹⁾	L/min	3
	Spindle water ⁽¹⁾	L/min	1.1
Dimensions	WxDxH	mm	875 X 975 X 1,450
	Weight	Kg	900
Features	Automatic alignment		-
	Automatic kerf inspection		-
	Automatic Y offset correction		-

(1) per spindle

Environmental Requirements

Room Temperature: 25°C ± 5°C (77°F ± 9°F), Humidity: Less than 70% relative humidity (non-condensing)
Floor must be vibration free

Note: Specifications are subject to change without notice

USA Subsidiary
Advanced Dicing Technologies Inc.
1155 Business Center Drive, Horsham,
PA 19044, USA
Toll Free: 800-604-4950
Tel: 215-773-9155
Fax: 215-773-9844
Email: us-support@adt-co.com

China RO
Advanced Dicing Technologies Ltd
1st. floor, Building 19, No. 600 Minsheng
Road, PuDong, Shanghai, 200135,
China
Tel: 86-21-5093-9293
Fax: 86-21-5093-9890
Email: china_support@adt-co.com